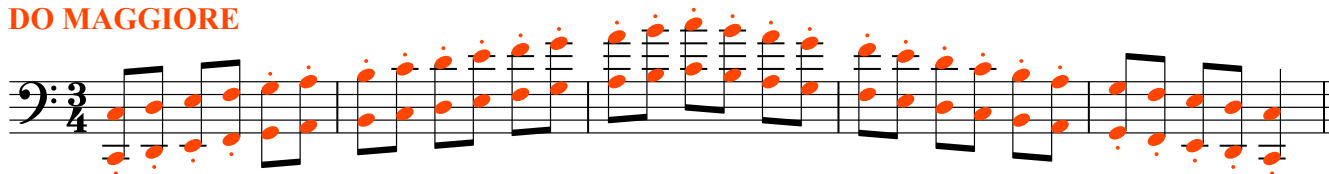


SCALE 2 OTTAVE - Jacques Mauger - EDIT Nicola Ferro

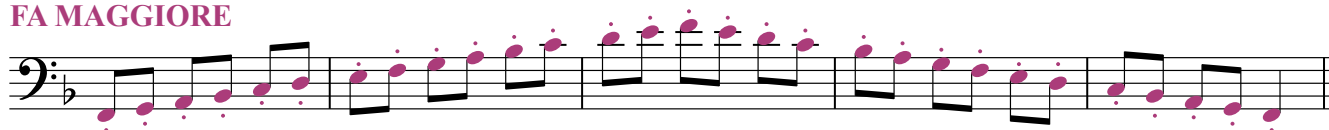
DO MAGGIORE



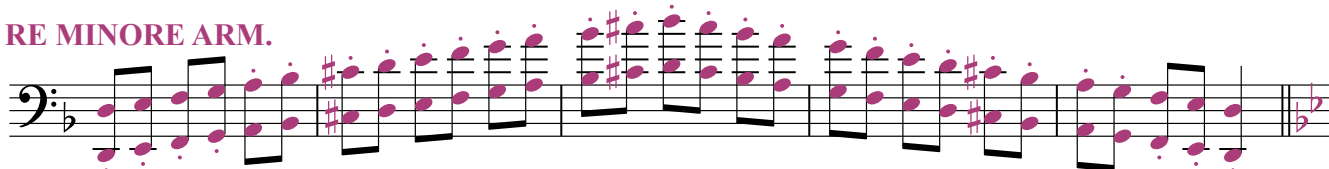
LA MINORE ARM.



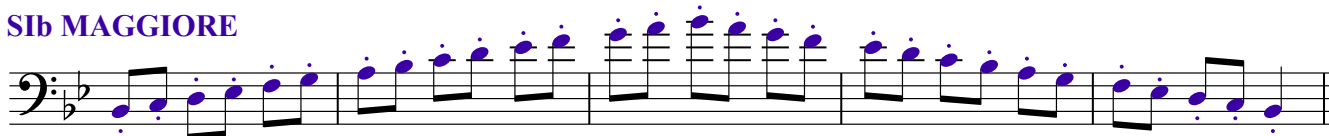
FA MAGGIORE



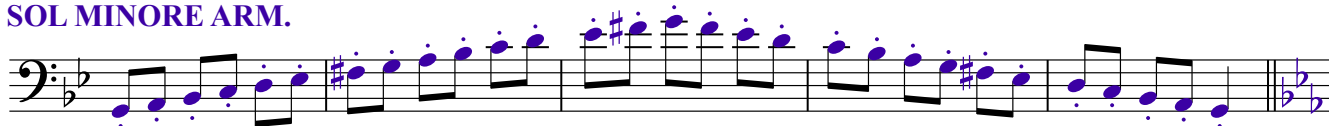
RE MINORE ARM.



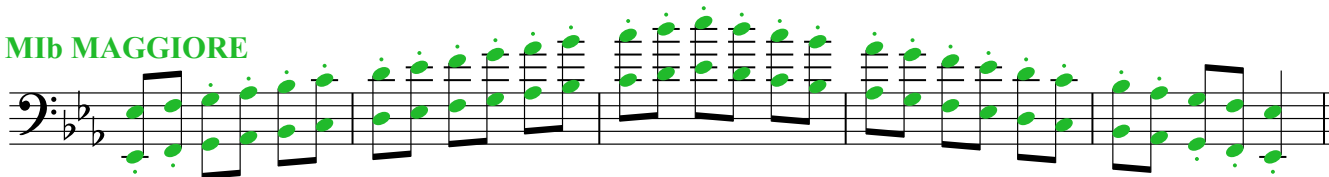
SIb MAGGIORE



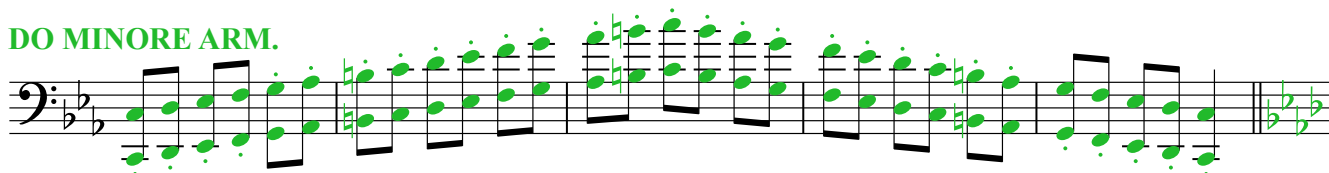
SOL MINORE ARM.



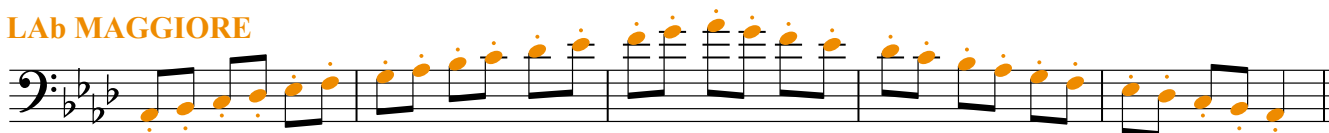
MIB MAGGIORE



DO MINORE ARM.



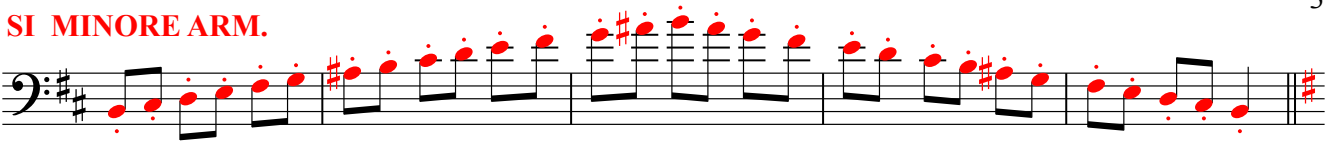
LAB MAGGIORE



FA MINORE ARM.

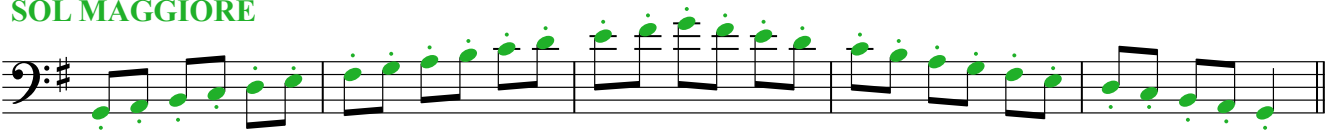


SI MINORE ARM.



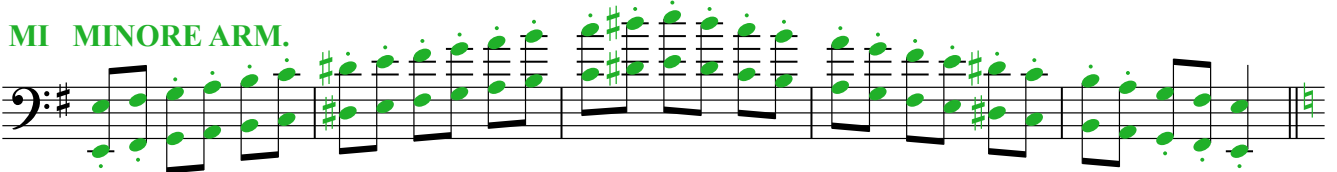
Musical notation for Si minore arm. in bass clef with a key signature of two sharps (F# and C#). The notes are marked with red dots and include accidentals (sharps) for the notes G# and D#.

SOL MAGGIORE



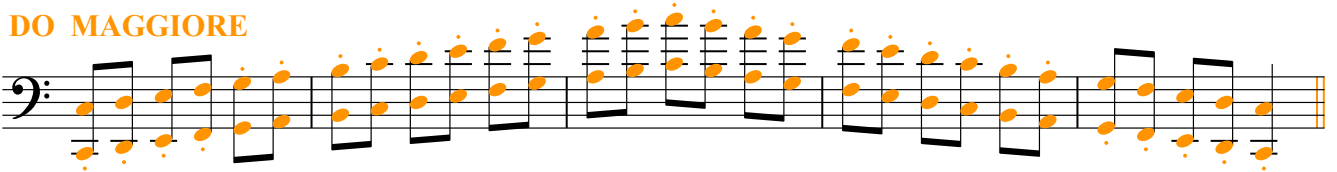
Musical notation for Sol maggiore in bass clef with a key signature of two sharps (F# and C#). The notes are marked with green dots.

MI MINORE ARM.



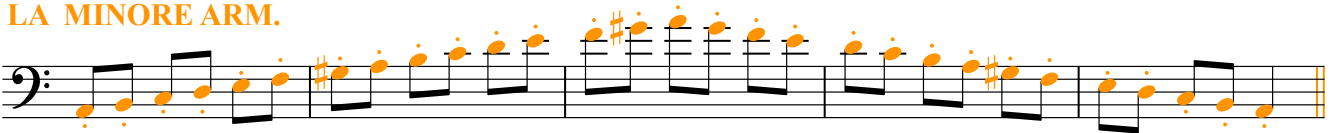
Musical notation for Mi minore arm. in bass clef with a key signature of two sharps (F# and C#). The notes are marked with green dots and include accidentals (sharps) for the notes G# and D#.

DO MAGGIORE



Musical notation for Do maggiore in bass clef with a key signature of two sharps (F# and C#). The notes are marked with orange dots.

LA MINORE ARM.



Musical notation for La minore arm. in bass clef with a key signature of two sharps (F# and C#). The notes are marked with orange dots and include accidentals (sharps) for the notes G# and D#.