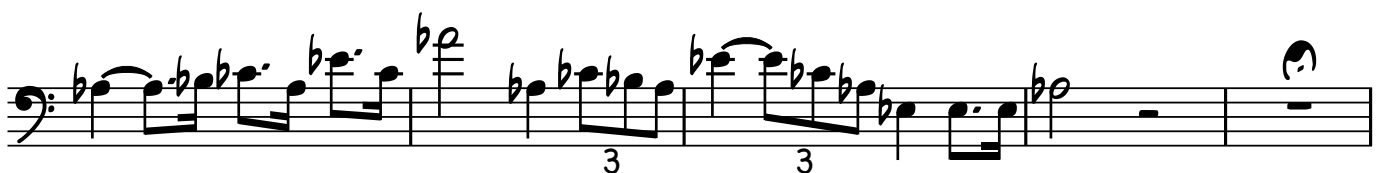
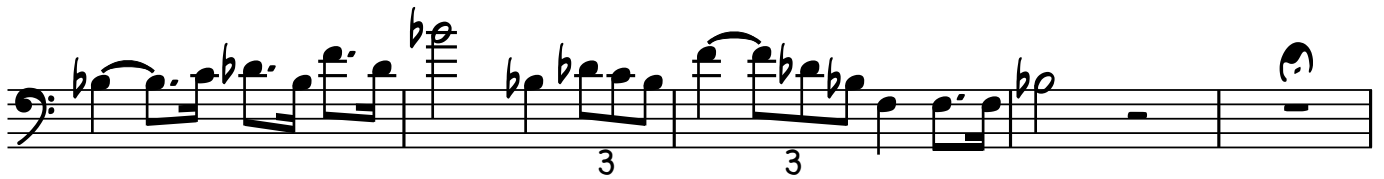


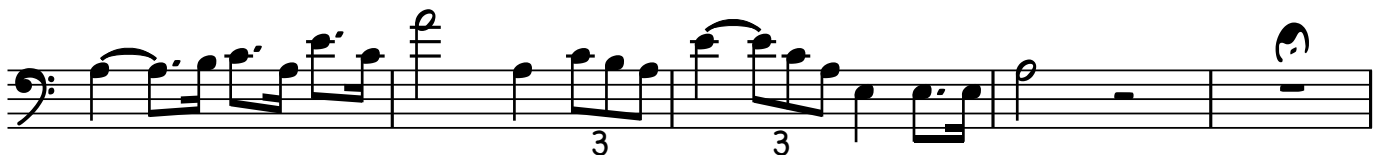
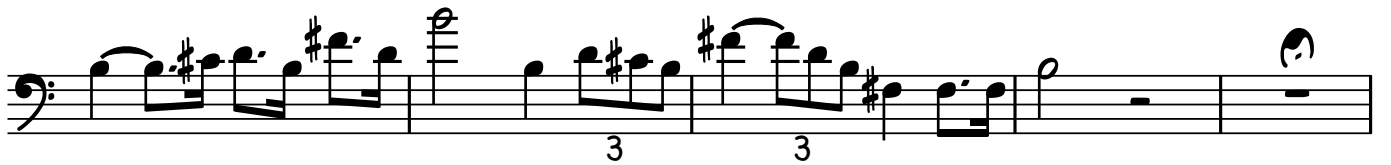


Trombone Exercises #9

Theme from Star Wars in all Key J. Williams
edit Nicola Ferro

CHANGE TEMPO WORK ON ARTICULATION





The image displays six staves of musical notation in bass clef. The notation includes various rhythmic values, slurs, and triplets. Dynamics such as *p* (piano) and *f* (forte) are indicated. The music features several triplet patterns, often marked with a '3' below the notes. The staves are connected by a brace on the left side. The notation is clean and professional, typical of a printed musical score.

